

QuickShifter easy Supplementary Manual

Honda CBR600RR 2003-2006 (iQSE-1 + QSH-P4B)

Remove the main seat.



Remove the black side covers from fuel tank.



Remove the ram-air covers.

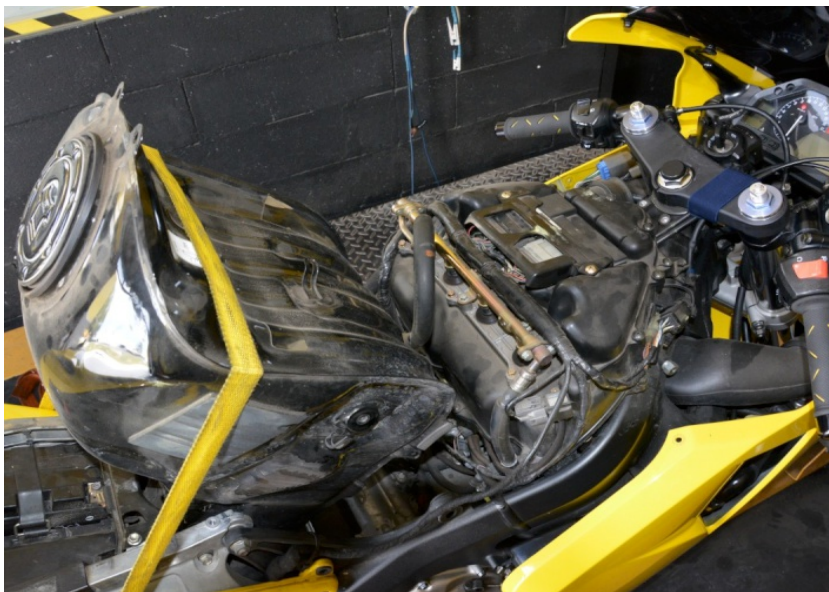
Remove the fuel tank cover.



QuickShifter easy Supplementary Manual

Honda CBR600RR 2003-2006 (iQSE-1 + QSH-P4B)

Lift up or remove the fuel tank.



Remove the airbox.



Plug the QSH connectors in-line with the
ignition coil connectors.

*(Black, 2-pole connectors on the top of the
engine)*



QuickShifter easy Supplementary Manual



Honda CBR600RR 2003-2006 (iQSE-1 + QSH-P4B)

Connect the QSH Black wire terminal to the chassis ground.



Mount the QSE sensor.

(Replace the bolt with the one supplied. Place the supplied washers at both sides of the sensor. Tighten the bolt in this position by about 6 Nm. If you do not have torque wrench, tighten the bolt until the shift arm is tight on the gearbox shaft.)



Typical position for the QuickShifter easy.

Secure the unit properly.

