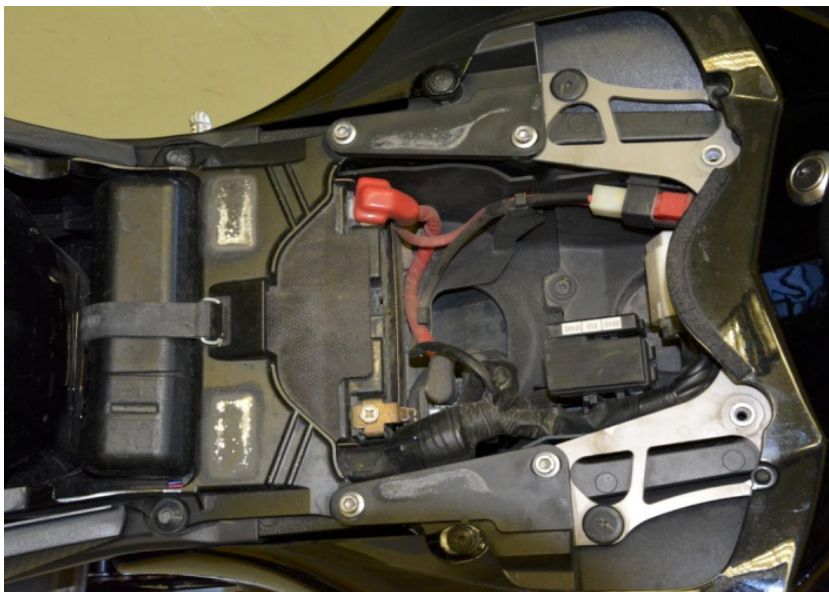


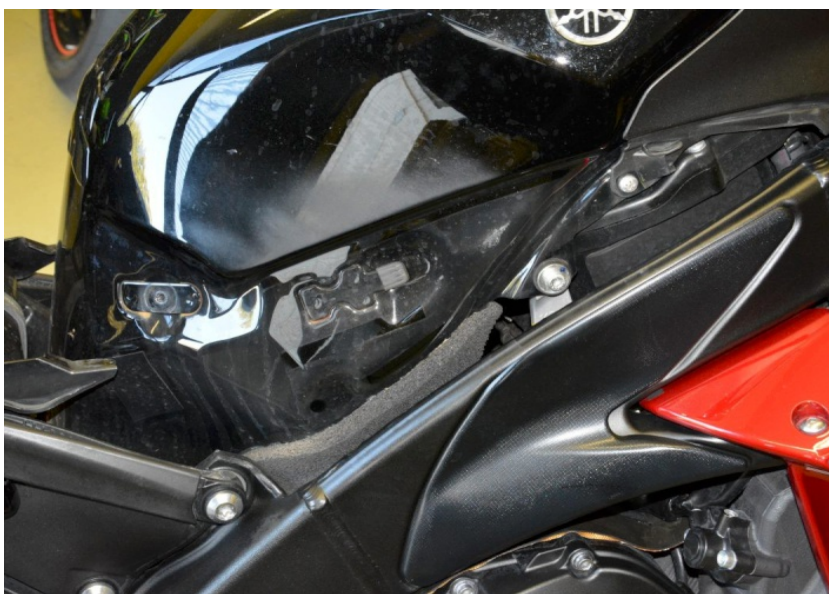
# QuickShifter easy Supplementary Manual

Yamaha YZF-R1 2009-2014 (iQSE-1 + QSH-P4A)

Remove the main seat.



Remove the black fuel tank covers.



Remove the fuel tank.



# QuickShifter easy Supplementary Manual



Yamaha YZF-R1 2009-2014 (iQSE-1 + QSH-P4A)

Remove the airbox.

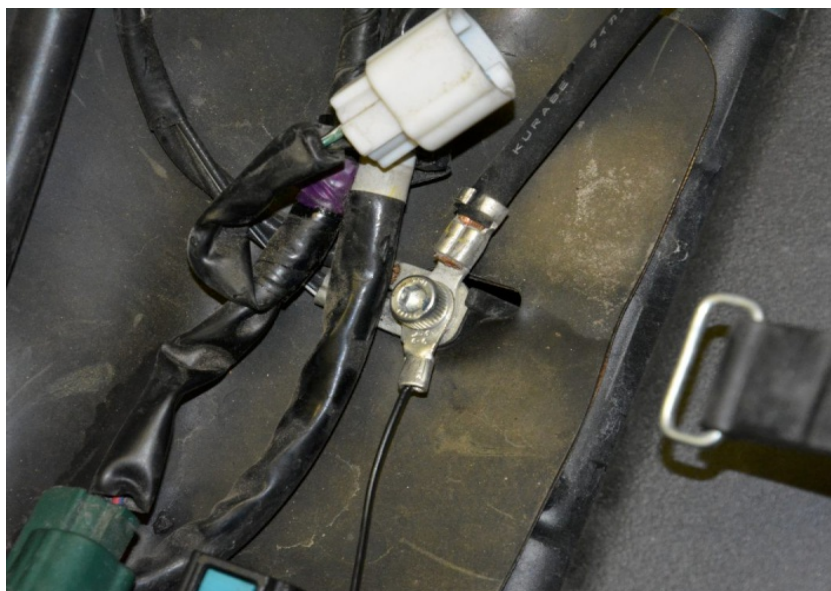


Plug the QSH connectors in-line with the ignition coil connectors.

*(Black, 2-pole connectors below the airbox)*



Connect the QSH Black wire terminal to the chassis ground.





# QuickShifter easy Supplementary Manual



## Yamaha YZF-R1 2009-2014 (iQSE-1 + QSH-P4A)

Mount the QSE sensor.

*(Replace the bolt with the one supplied.  
Place the supplied washers at both sides of  
the sensor. Tighten the bolt in this position  
by about 6 Nm. If you do not have torque  
wrench, tighten the bolt until the shift arm  
is tight on the gearbox shaft.)*



Typical position for the QuickShifter easy.

Secure the unit properly.

