

Honda CB650R ABS TC 2019- (iLE-1-KIT)

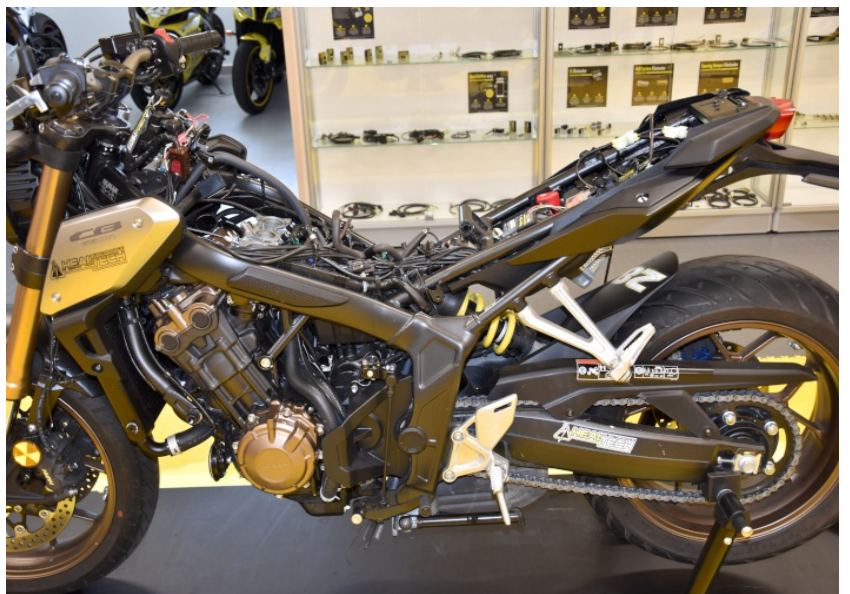
Secure the bike on a stand.



Remove the seats.

Remove the plastic covers from the fuel tank.

Remove the fuel tank and the airbox.



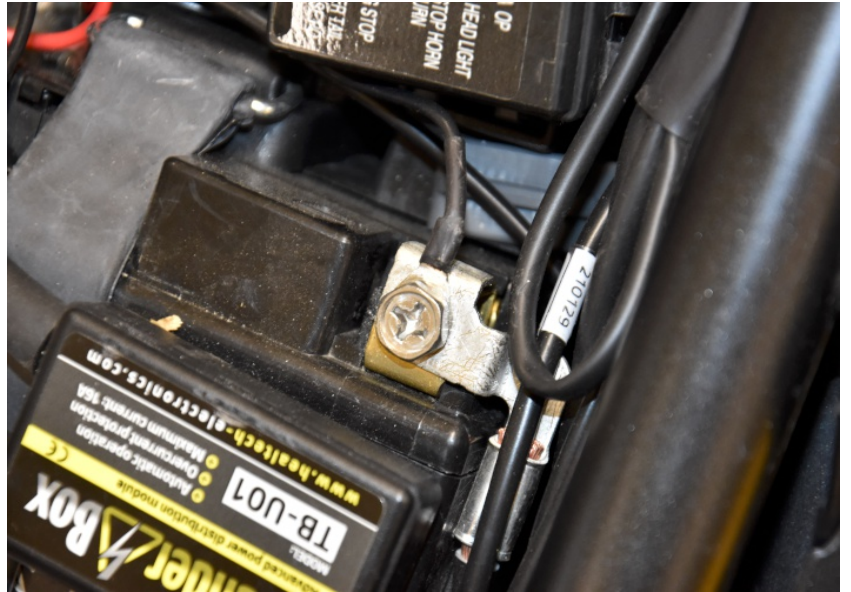
Connect the iLE-H-PWR Red wire to the Yellow/Red wire of the ignition coil connector.(Switched +12V)

Connect the iLE-H-PWR White wire to the Green/Blue wire of the ignition coil connector.(RPM)

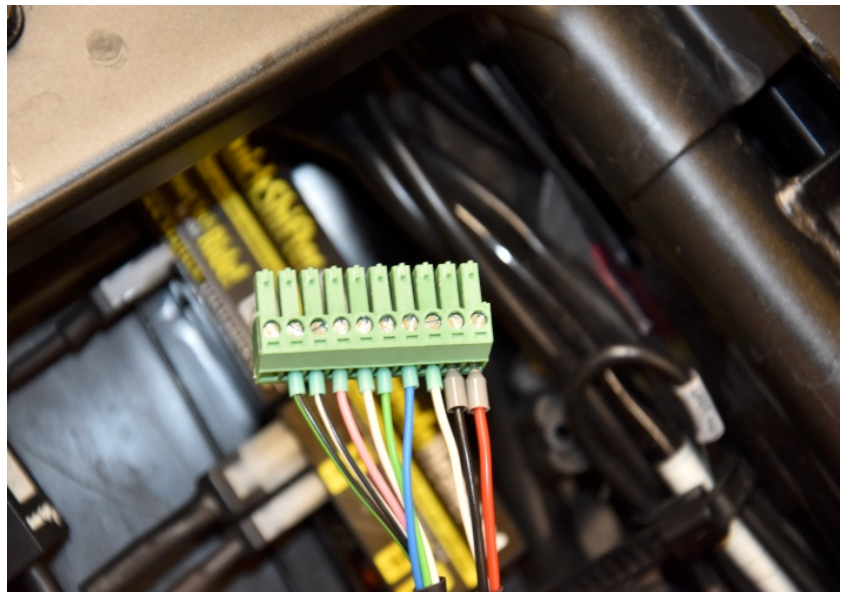


Honda CB650R ABS TC 2019- (iLE-1-KIT)

Connect the iLE Black wire terminal to the battery negative terminal.



Connect the Red, Black and White wires to the green terminal block as show on the photo.



If the iLE is used together with the iQSE quickshifter, plug the iLE-H-iQSE connectors in-line with the 4-pole iQSE connectors, then connect the Red, Black and White wires to the green terminal block.



Honda CB650R ABS TC 2019- (iLE-1-KIT)

Connect the green terminal block to the iLE modul.



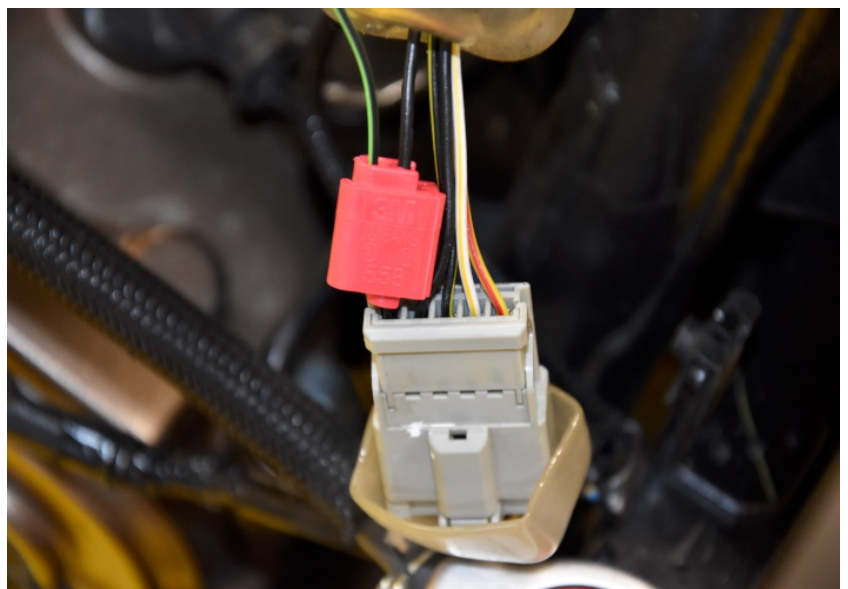
Splice the iLE Blue VSS wire to the Pink/Green wire of the speed sensor connector.

(Black, 3-pole connector under the fuel tank)



Optional:

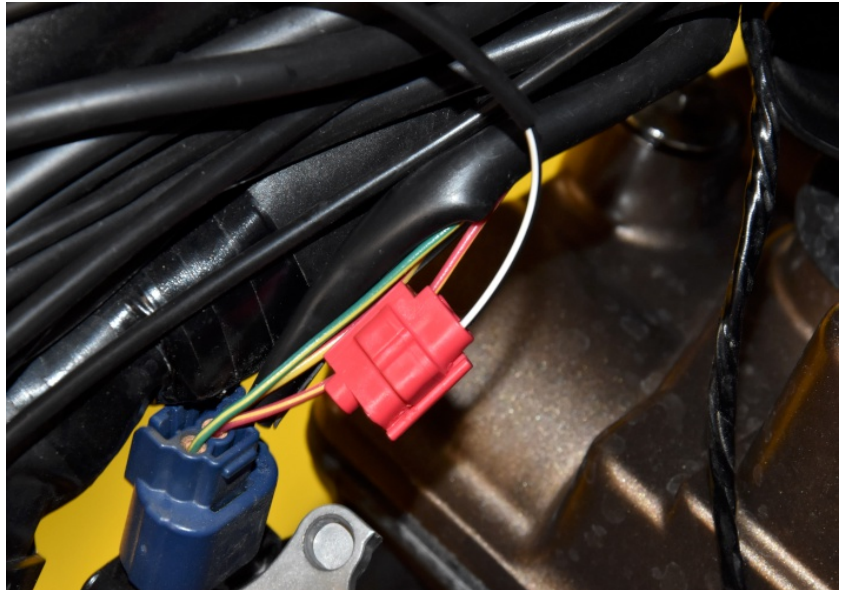
Connect the iLE Black/Green wire to the Black wire of the Front brake switch.



Honda CB650R ABS TC 2019- (iLE-1-KIT)

Optional:

Connect the iLE Black/White wire to the Red/Yellow wire of the Throttle position sensor.



Optional:

Connect the iLE Pink wire to the Grey/Blue wire of the Intake air temperature sensor at the ECU grey connector.(Pin #29)



Optional:

Connect the iLE White wire to the Pink/White wire of the Engine coolant temperature sensor at the ECU grey connector.(Pin #27).



Honda CB650R ABS TC 2019- (iLE-1-KIT)

Optional:

Connect the iLE Green wire to the Light Green wire of the Oil pressure switch under the fuel tank.



Mount the GPS receiver.

Connect the GPS connector to the iLE module.



Typical position for the iLE module.

Secure the unit properly.

